

# SAITO

Labels | Tags | InkJet

Labels, Tags & InkJet

Barcode Printers

Hand Labellers & Labels

Scanners & Full Service Support

## Meto Attachers and Loop Tag Ties

Our **Meto attachers** are compact, lightweight and reliable, perfect for all of your tagging needs; from apparel, luggage, sporting goods and more, the Meto range is strong enough to withstand long-term use.

The **Meto fastener** has a unique loop system that allows you to tag delicate garments without perforation and apply tags to solid items such as luggage and sporting goods. The units hook applicator wraps around selected areas of targeted items, such as a handbags shoulder strap. The systems tamper-evident plastic loop fasteners are then applied with a quick squeeze of the trigger. The loop tag cannot be removed without destroying the loop or damaging the tags.

## Attachers and Fasteners

### Features:

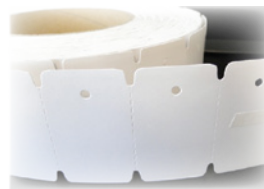
- Light weight, reliable and easy to use
- Short trigger stroke for a smooth feel
- Optimized spring tension
- Extended warranty available

### Models:

- Meto Standard Attacher | BEIGE | 6707024
- Meto Fastening Tool | RED | 6700162

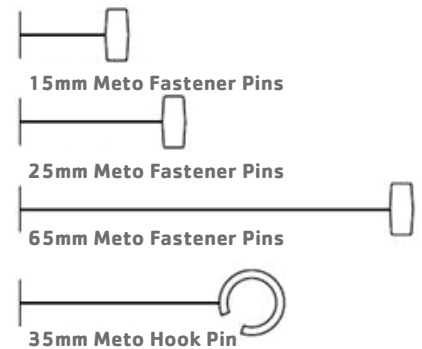
### Consumables:

- Meto Needles | Standard 5/Pack| 6700160
- Meto Pins - Standard | 15mm | 6700157
- Meto Pins - Standard | 25mm | 6700158
- Meto Pins - Standard | 65mm | 6700159
- Meto Hook Pins | 35mm | 6700152
- Pre-punched Swing Tags | 49mm x 29mm | 6707375
- Meto Fastening Tool Needles | Standard 5/Pack| 6700162
- Meto Fastening Tool Loop Tags | 4 Inch | 6700163
- Hand Applied Loop Tags | 75mm | 6700143
- Hand Applied Loop Tags | 150mm | 6700142
- Hand Applied Loop Tags | 225mm | 6700141



Pre-punched swing tags  
6707375

### Pin Examples



### Hand applied Loop Tags



[www.saito.co.nz](http://www.saito.co.nz)

[assist@saito.co.nz](mailto:assist@saito.co.nz)

[www.saito.com.au](http://www.saito.com.au)

[assist@saito.com.au](mailto:assist@saito.com.au)

**AUCKLAND HEAD OFFICE**  
3-7 Tawari Street  
Mt Eden  
Auckland 1024

PO Box 8590,  
Symonds Street  
Auckland 1150  
New Zealand

**BRISBANE HEAD OFFICE**  
Unit 2, 300 Cullen Ave East  
PO Box 1390  
Eagle Farm  
Queensland 4009  
Australia

**GLOBAL NEW ZEALAND**  
T: +64 9 623 7790  
F: +64 9 623 7791

**AUCKLAND  
TRADE & TECHNICAL**  
52 Victoria Street  
Onehunga, Auckland 1061

**DOMESTIC**  
T: 0800 724 866  
0800 Saito NZ  
F: 0800 724 863

**DOMESTIC**  
T: 1300 130 800

**GLOBAL AUSTRALIA**  
T: +61 7 3260 4000  
F: +61 7 3260 4001